



PRAN ELECTRONICS PVT. LTD.

52, GIDC, Makarpura, Vadodara - 390 010. India.
Phone : +91 - 265 - 263 2916, 263 5920 Fax : + 91 - 265 - 263 5918
E-mail : info@pranelectronics.com Web : www.pranelectronics.com

AN ISO 9001:2000 COMPANY

Modular Jack 623A:

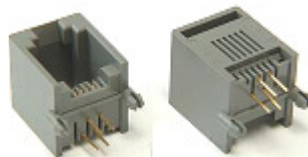
RoHS Compliant

Detail specifications and test conditions

Description: PCB Mounting Modular Jack

Code: JP-623A-6P2C/4C/6C

Gold Plating: Flash gold Options: 3, 6, 15, 30 or 50u”



Sr. No.	Item	Test Conditions	Criteria
ELECTRICAL SPECIFICATONS			
1.	Contact Resistance	Voltage drop Method 5 VDC, 10mA	40 milli Ohms Maximum
2.	Proof Voltage	1000 VAC Duration: 1 Minute	No breakdown
3.	Insulation Resistance	500 VDC Duration: 1 Minute	100 Mega Ohms Minimum
MATERIAL SPECIFICATONS			
4.	Housing	PBT 30% glass filled	UL 94V0
5.	Contact Material	Phosphor Bronze	0.46 dia. +/- 0.01mm
6.	Contact Plating	3u” standard, higher plating optional	Gold Plating
MECHANICAL SPECIFICATONS			
7.	Mating Force	4 Contacts – 500 Grams	500 Grams
8.	Retention Force	Between Jack and Plug	7.7 Kgs.
ENDURANCE SPECIFICATION			
9.	Operating Life	5 VDC at 5 mA, resistive load Rate of operation: 2 to 3 operations per second Cycles of Operation: 600	Minimum 600 Cycles

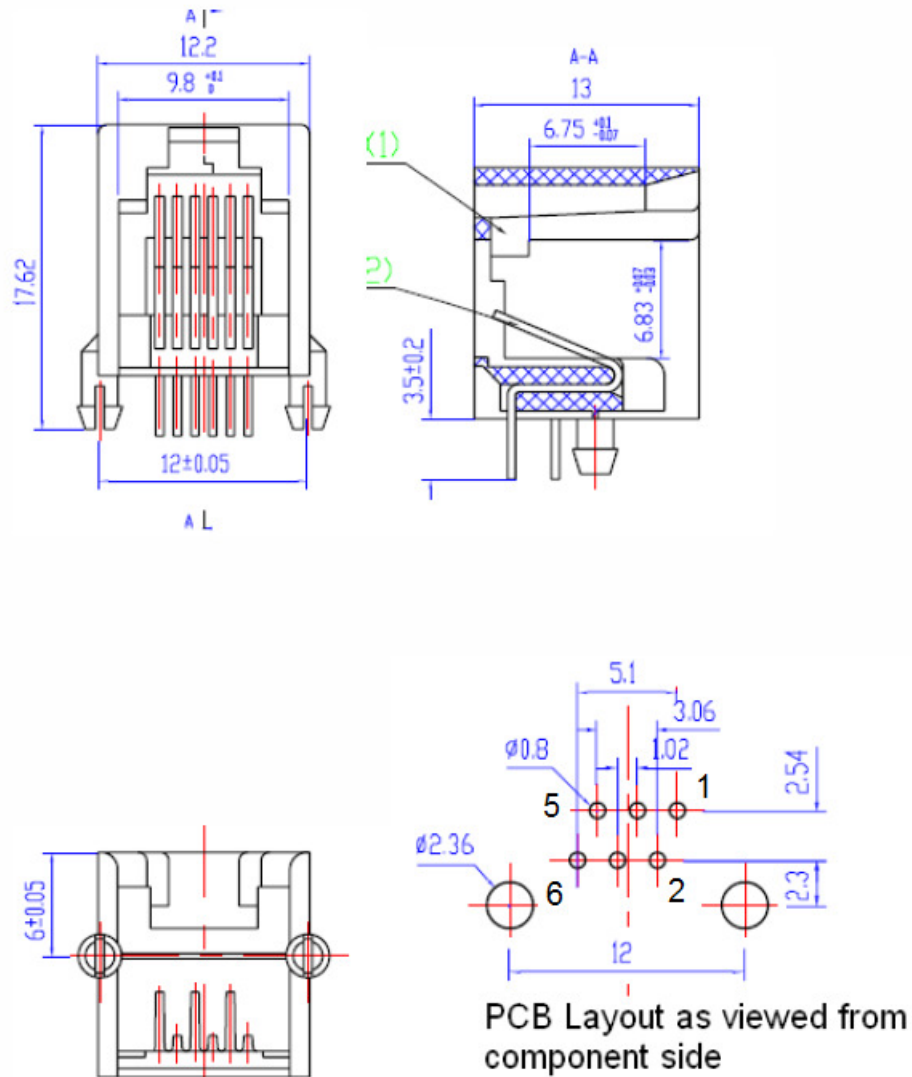


PRAN ELECTRONICS PVT. LTD.

52, GIDC, Makarpura, Vadodara - 390 010. India.
Phone : +91 - 265 - 263 2916, 263 5920 Fax : + 91 - 265 - 263 5918
E-mail : info@pranelectronics.com Web : www.pranelectronics.com

AN ISO 9001:2000 COMPANY

Modular Jack 623A: Drawing



- JP - 623A - 6P6C = All 6 contacts loaded pin nos. 1 to 6
- JP - 623A - 6P4C = Center 4 contacts loaded pin nos. 2,3,4,5
- JP - 623A - 6P2C = Center 2 contacts loaded pin nos. 3 and 4

Rev. 01 date 16/7/2014, pin nos. added