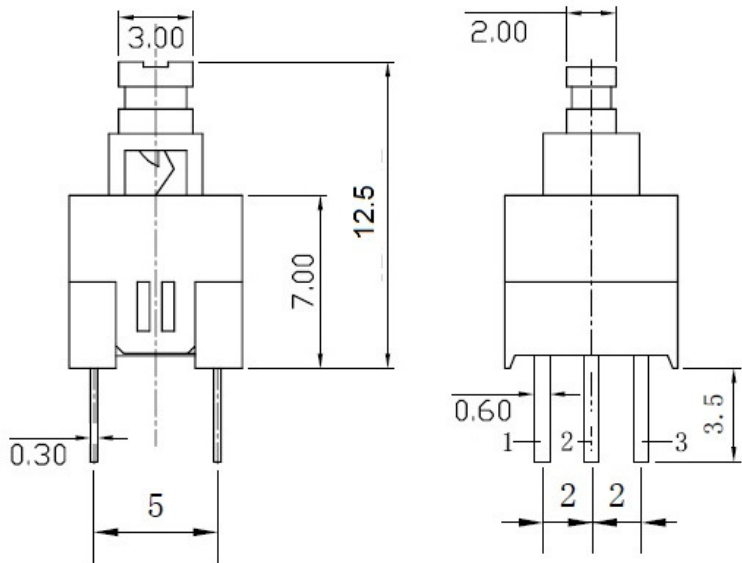


PUSH SWITCH 7 X 7mm

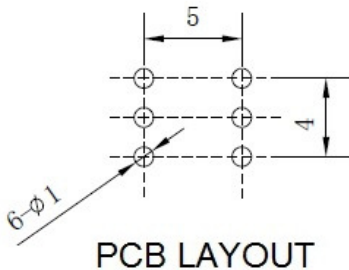
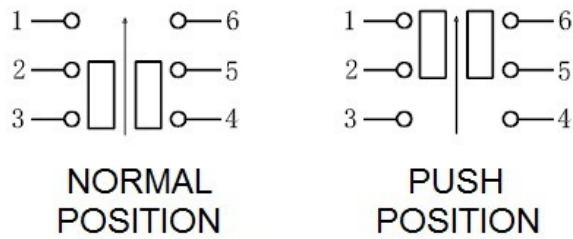
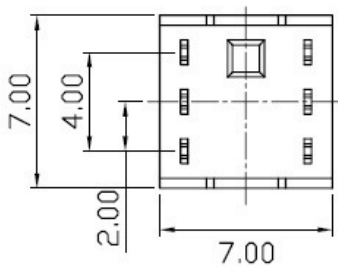
PART CODE: PS-2270-NL = NON LOCK, MOMENTARY
PART CODE: PS-2270-SL = SELF LOCK, LOCKING

ROHS COMPLIANT



SPECIFICATIONS:

- 1. Rating: 30V DC 100mA
- 2. Contact resistance initial: 100 milli ohms maximum
- 3. Contact resistance after life: 200 milli ohms maximum
- 4. Insulation resistance: 100 M ohms at 500VDC
- 5. Proof Voltage: 500 VAC for 1 minute
- 6. Travel: 2 ± 0.2 mm
- 7. Operating force: 200 ± 50 gf
- 8. Operating life: 10000 cycles mechanical, 6000 cycles electrical
- 9. Operating Temperature: -40 to 80 Deg. C
- 10. General tolerance: ± 0.3 mm



REV.01 DATE 05/10/21

 PRAN ELECTRONICS PVT. LTD.
INDIA.